



The Clarksville Presbyterian

First Presbyterian Church Clarksville, Texas

Oldest Protestant Church In Texas
Established 1833

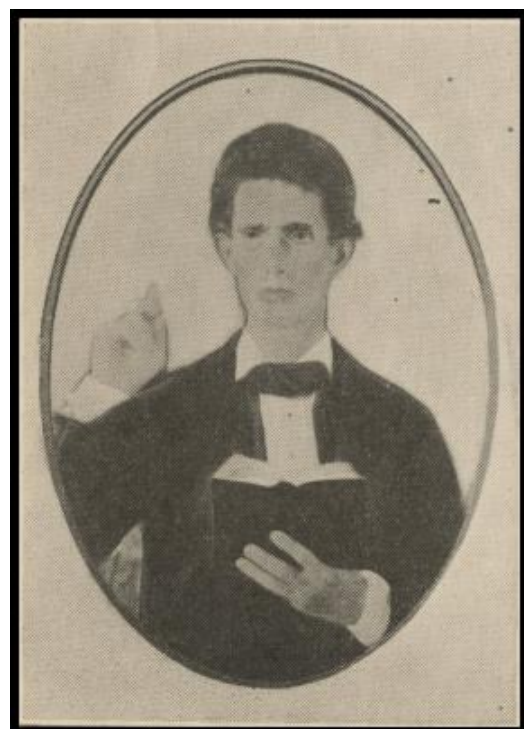
Volume 20, Issue 10

December 2014

Samuel Madison Corley

SAMUEL MADISON CORLEY came to Clarksville from Rutherford County, Tenn., in 1840 to be the first pastor of the Shiloh and adjacent churches. He came by boat to Rowland, on Red River, north of Clarksville, and through the country to the home of Rev. James Sampson and preached that night in this home to a congregation assembled by runners announcing the service during the afternoon. For two years he ministered to the Shiloh and Savannah churches.

After his wife's death in 1845, he for some years extended his labors in a wide circuit including Paris, Bonham, through the southern counties around to Bowie County, and afterward extensively through the Southern States. In 1847 he and his young son, A. P. Corley, went to the Mexican War. In 1848 he returned to Clarksville and took charge of the Clarksville Female Academy, meanwhile ministering to the Shiloh-Clarksville and the Paris churches. In 1843 he had been present at the organization of the First Synod, and preached with great power in the Camp Meeting where the Synod was organized. He was called the "Sweet Singer of Israel," and it was said that a hymn sung by Corley would put any congregation in a worshiping frame of mind. [Dr. Crisman](#), in his *Origin and Doctrines*, accredits Corley with contributing largely to the rallying of the [Texas Presbytery](#) at the time when under discouragement it was about to disband or sever its connection with the General Assembly in the States.



In 1850 he served for a time as military chaplain at old Fort Towson in the Indian Territory. Engaging in teaching and preaching until the War Between the States, he enlisted in the Confederate Army, and as Major was leading his regiment in battle near Little Rock, was mortally wounded and made prisoner. The enemy officers gave him every courtesy and attention, and after his death, sent his servant, Carrol Corley, back to his people with his horses, sword, watch and other personal effects, and one of them wrote to the family that "Major Corley on September 11th, 1863, was wounded in battle at Bayou La Fouche, 3 1/2 miles below Little Rock, Arkansas, on south side of river, while in command of Col. A. Dobbins' Reg. C.S.A. He died September 11th, 1863, and was buried in a peach orchard on the battle field." His remains were later removed to Confederate Cemetery at Helena, Arkansas, by the Daughters of the Confederacy and a monument placed at his grave. Fourteen of his descendants were members of the First Presbyterian Church in Clarksville at the Centennial Celebration in 1933.

[Source: "A Paper on Early Cumberland Presbyterian History in Texas Read in Part by Rev. S. M. Templeton in a Joint Session of the Synods of Texas U.S. and U.S.A. in Fort Worth, Texas]

The Corley Chapel was dedicated to his memory in 1962. While no descendants are members of our congregation at this time, many keep in touch with Clarksville and retain close ties to our congregation. A large contingent of Corley descendants was present at the 175th anniversary celebration and participated in the activities of the day, including a Corley/Marable Family Chorus.



Presbyterian Happenings

Annual Christmas Candlelight Service

Our annual Christmas Candlelight Service will be held on Saturday, December 20, 2014 at 5:00 p.m. in our Sanctuary. Once again, we will be joined by members of McKenzie Methodist, St. John Lutheran, and St. Joseph Catholic Churches. The choir will be directed by Claire Jesse and accompanied by Marianne Whitehouse. Please take note that this service will be on SATURDAY rather than the usual Sunday evening.

Christmas Eve Services

The annual Christmas Eve Service will be held at the Methodist Church at 5 p.m. on Christmas Eve.

DECEMBER 2014

SUNDAY	MONDAY	TUESDAY	WEDNESDAY	THURSDAY	FRIDAY	SATURDAY
	1	2 Janice Millikan	3	4 Morgan Humphrey	5 Kelsey Baird	6 Billie Edwards
7	8	9	10	11	12	13
14 Nancy Nichols	15	16	17	18	19 Charles Malone	20 Candlelight Service – 5 p.m.
21	22	23	24 Christmas Eve Service – Meth. Church Bessie Grady	25 Christmas Cole Ward	26	27
28	29 Chace Rains	30	31 New Year's Eve Tamela Rains			